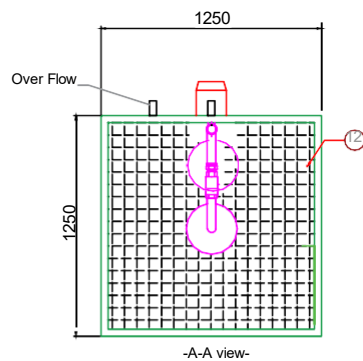
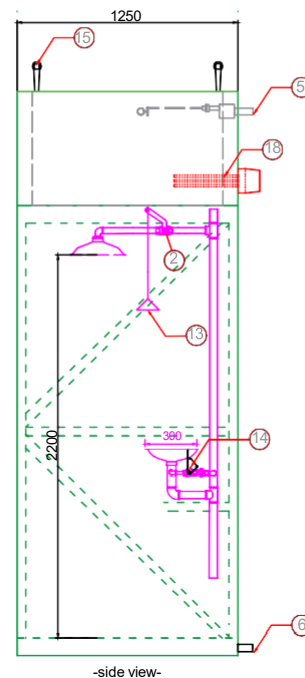
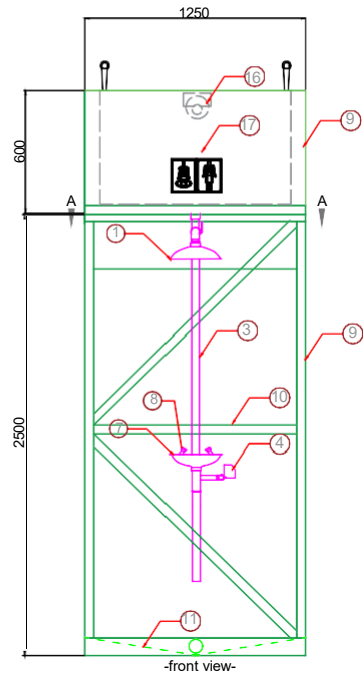


EMERGENCY SHOWER AND EYE/FACE WASH
WITH OVERHEAD GALVANIZE WATER TANK WITH INSULATED (630 lt)



Standards: EN 15154-1-2-3
Water Flow: 75,7 lt / min for Shower
: 11,4 lt/min for eye/face wash
Total Weight:
Packed Dimensions:
Cabinet: 140x140x267 cm
Water Tank: 140x155x90 cm

NO.	DESCRIPTION	MATERIAL
18	Immersion Heater	Non Exproof
17	630 L Water Tank	Galvanized Steel With Insulated
16	Buoy	Brass
15	Lifting Hook	Galvanized Steel
14	Handle Control for eye/face wash	Stainless Steel 304
13	Pull Rod for shower	Stainless Steel 304
12	Grating	GRP
11	Waste Water Draining Sump	Galvanized Painted
10	Main Frame	Galvanized Painted
9	Side and Back Panels	GRP
8	Spray Nozzles	Stainless Steel 304
7	Eyewash Bowl	Stainless Steel 304
6	Water Outlet 1 1/2"	Galvanized Painted
5	Water Inlet 1" (Female)	Galvanized Steel
4	Push Handle Control for Eyewash	Stainless Steel 304
3	Pipes	Stainless Steel 304
2	1" Ball Valve	Stainless Steel 304
1	Shower head	Stainless Steel 304

TOLERANCE:± 5 CM

						CUSTOMER	
		FIRST ISSUE		SS	FA	ST	
REV.		DATE		DESCRIPTION		DESIGNED CHECKED APPROVED	
STATUS	FOR INFORMATION	FOR RFQ/DESIGN		ORIGINAL EDITION		SIZE SCALE	
	FOR REVIEW			DESIGNED		A4 1/100	
	FOR APPROVAL			CHECKED			
					APPROVED		
DRAWING NUMBER/DATE: 515/17-1						SHEET: 1 OF 1	DRAWING NAME: 23-1503-510